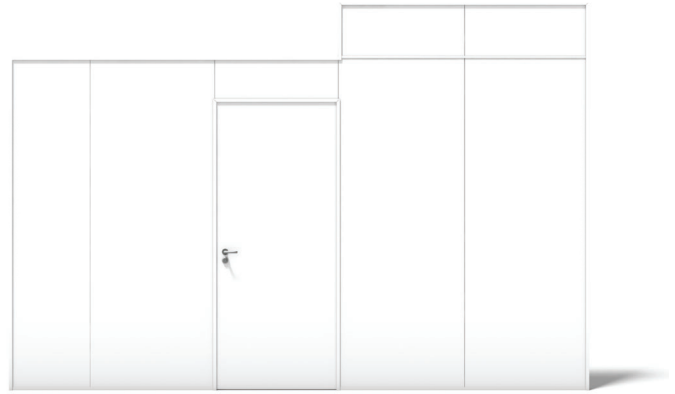


VINWALL

# VINWALL

Modular movable partition of vinyl plates, which, unlike conventional plasterboard partitions, can be installed completely dust-free. Plates and frames may be easily stored and re-installed, if necessary, without any additional investment. Blind walls are formed on the metal frame by plasterboards covered with vinyl wallpaper, installed by means of special clamps or strips.



WIDTH (W)

**900 mm**

Width

**Unlimited**

STANDARD SIZE OF A DOOR IN A WALL

**M9 (890 mm) x M21 (2090 mm)**

FINISH

Vinyl wallpaper NCS S0500-N

CEILING JOINTS

Strip, seal, U-plate, provided by the client (node V3)

FLOOR JOINTS

U-plate, strip, provided by the client (node V1)

WALL JOINTS

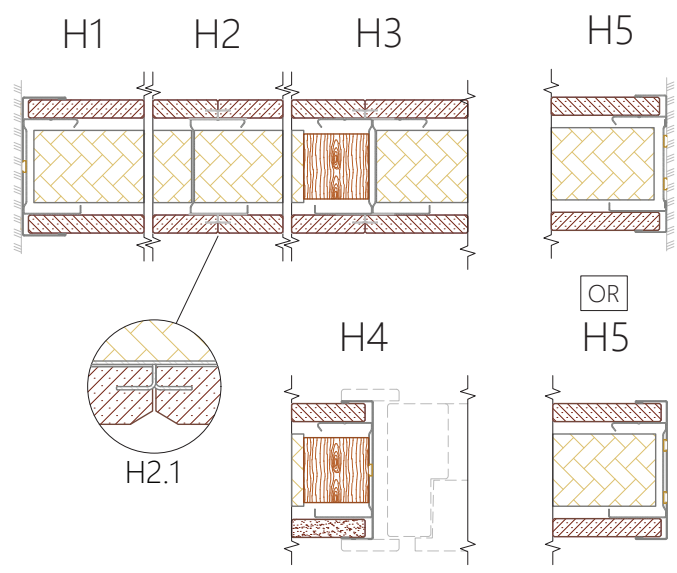
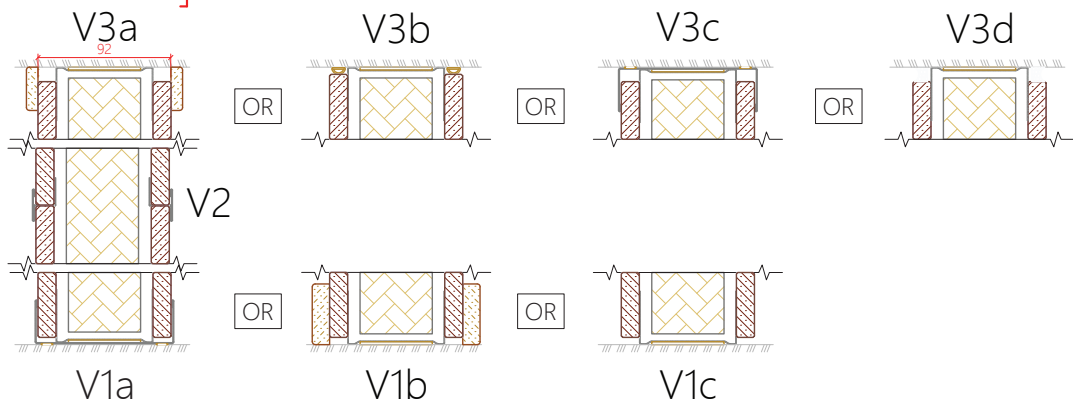
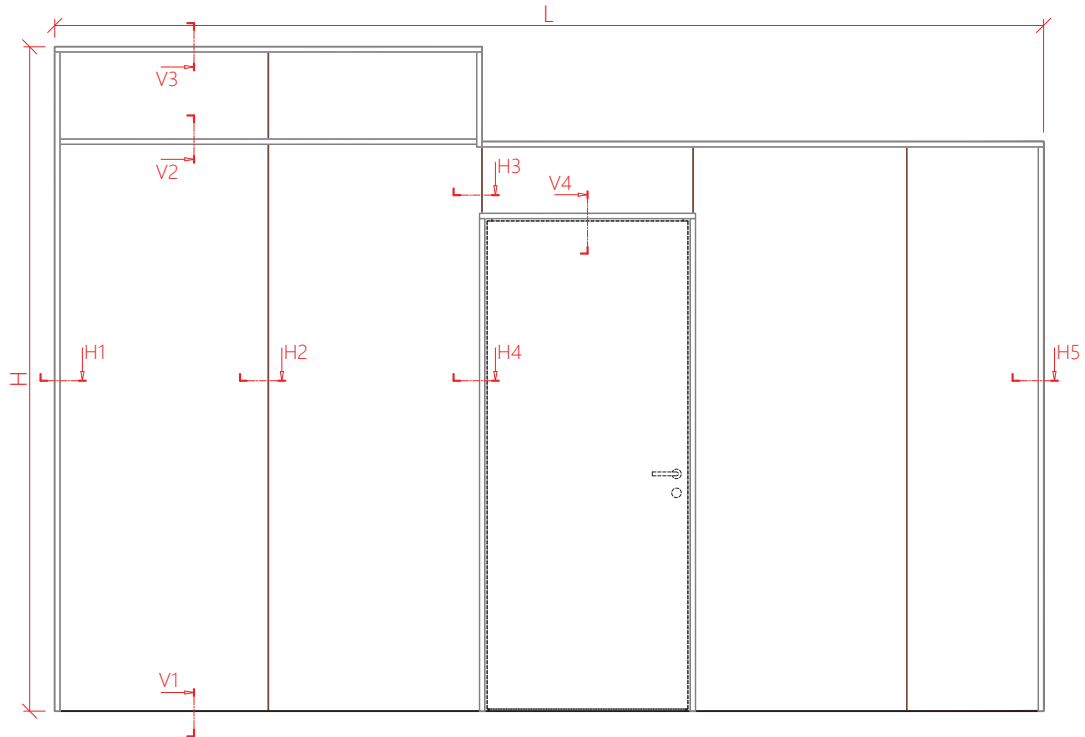
U-plate (node H1 / H5)

In case of high walls, the plate is in two parts, the joint is covered with an additional strip (node V2)

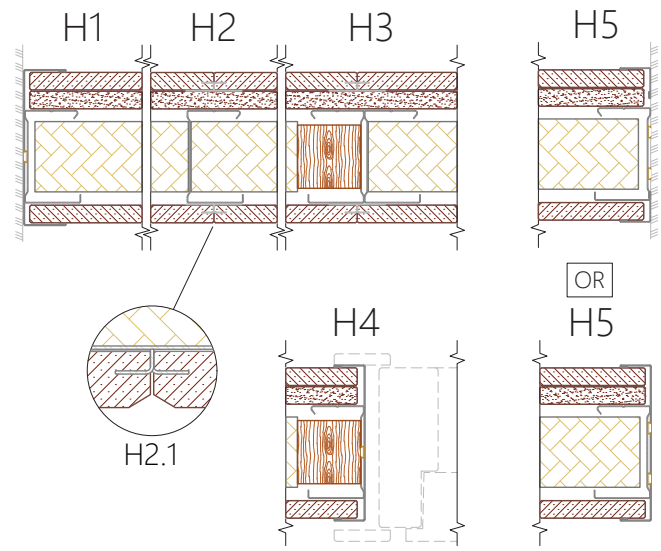
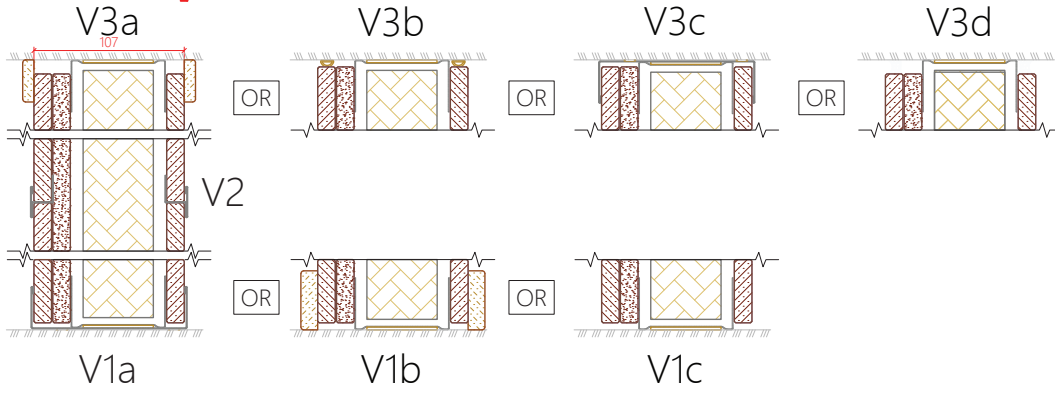
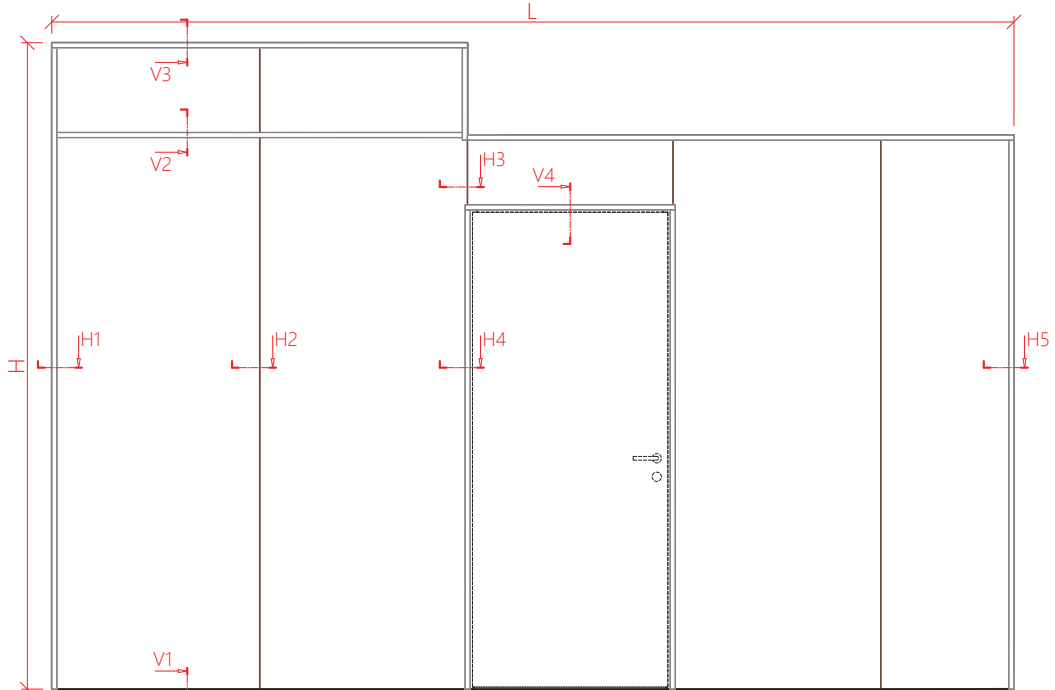
Type	Estimated sound insulation index (Rw)	Number of layers	Max height* (mm)	Depth (mm)
<i>VINWALL 43</i>	43 dB	1 + 1	3000	92
<i>VINWALL 48</i>	48 dB	1 + 2	3300	107
<i>VINWALL 51</i>	51 dB	2 + 2	3500	120

\*Custom dimensions upon agreement

# VINWALL 43



# VINWALL 48



# VINWALL 51

